



Parkfields

Estates



Greenford Avenue , Southall, UB1 2AG

Parkfields are pleased to offer for rent this 3 bedroom house, include 1 reception room, ground floor bathroom, fitted kitchen and off street parking. Located just moments from SOUTHALL BROADWAY AND LADY MARGARET ROAD all with plenty of amenities. Early viewings are highly recommended.

Local Authority: London Borough of Ealing
Council Tax Band: C
EPC Rating: D

£2,400 Per Month

98 Greenford Avenue

, Southall, UB1 2AG

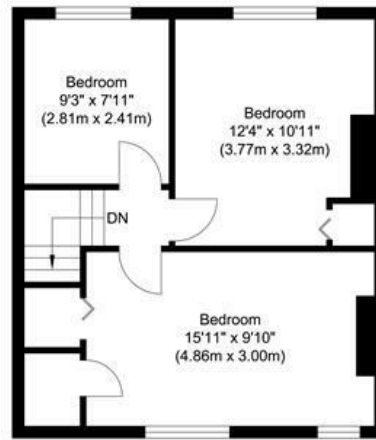
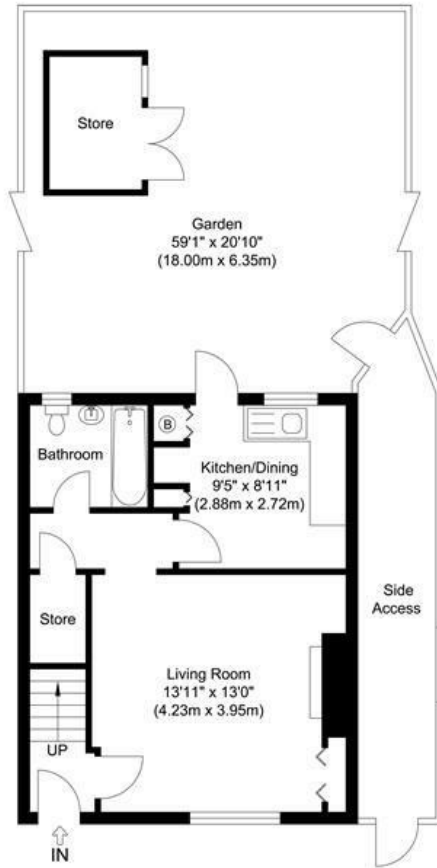


- MID TERRACE
- SIDE ACCESS WAY
- LONG REAR GARDEN
- IN NEED OF SOME UPDATING
- THREE BEDROOMS
- SCOPE TO EXTEND (STPP)
- OFF STREET PARKING
- LOUNGE
- NO ONWARD CHAIN



Directions

Floor Plan



Ground Floor
Approximate Floor Area
383.30 sq. ft.
(35.61 sq. m)

First Floor
Approximate Floor Area
424.85 sq. ft.
(39.47 sq. m)

Total Gross Internal Area (Including Store)
844.85 sq. ft.
(78.49 sq. m)

Total Gross Internal Area (Excluding Store)
808.15 sq. ft.
(75.08 sq. m)

Greenford Avenue, Southall, UB1

Illustration for identification purposes only, measurements are approximate, not to scale.

These particulars, whilst believed to be accurate are set out as a general outline only for guidance and do not constitute any part of an offer or contract. Intending purchasers should not rely on them as statements of representation of fact, but must satisfy themselves by inspection or otherwise as to their accuracy. No person in this firm's employment has the authority to make or give any representation or warranty in respect of the property.

Energy Efficiency Rating		Current	Potential
Very energy efficient - lower running costs			
(92 plus) A			82
(81-91) B			
(69-80) C			
(55-68) D		61	
(39-54) E			
(21-38) F			
(1-20) G			
Not energy efficient - higher running costs			
England & Wales		EU Directive 2002/91/EC	